



NEWSLETTER

CONTACT US

Contact us at inmanpac@gmail.com

Watch for details about **PAC** news, events, meetings and more through our principal's emails and social media accounts.

 Follow **@inman.pac** on *Instagram*

 Join **Inman PAC** on *Facebook*



Please join us at our next
PAC meeting on
Wednesday, January 7th at 7pm
in the library & on ZOOM.



TABLE OF CONTENTS

Who is PAC? What do we do?

Page 2

PAC Vacancy & Volunteers

Page 3

Hot Lunch + Milk Program
New Monthly Subway Days!

Page 4

Valentine's Pizza Hot Lunch

Page 5

Fundraising Update

Page 6

Canadian Parents for French

Page 7

Oliver's Labels

Page 8

* Participation in events & fundraisers are completely optional. All proceeds raised benefit our Inman community.





ÉCOLE INMAN ELEMENTARY PARENT ADVISORY COUNCIL (PAC)

What is the PAC & Who Can Join?

The Parent Advisory Council (PAC) provides a voice & acts as a point of resource & support for our parent community. All Inman parents & guardians are automatically members.



How Does a PAC Work?

PACs have an important influence on school life & feelings the community has towards our school & education. Increased parent involvement results in increased student achievement, accomplishment, satisfaction & bonding.



The Purpose of PAC:

- Work collaboratively with our Principal, Head Teacher & staff to provide input to enhance our children's education, well-being & provide our children with enriching opportunities
- Build a strong & supportive community for our children, school & families through PAC programs, events & activities

Your Involvement:

Parents & Guardians are encouraged to bring forth issues, suggestions & ideas by:

- Attending PAC meetings
- Participate in school & PAC activities
- Contacting a PAC Executive Member
- Be a part of the Executive team!



Where Does the \$\$ Go?

Levelled Readers Santa Pancake Breakfast Music Instruments

School's Wish List Staff Appreciation Luncheon Hot Lunch Program

More Library Books Grade 7 Grad Field Trips

Other School Programs Teacher Consumables And Much Much More!



Attend a PAC meeting to:

- hear from our Principal
- stay connected to what is going on in your child's classroom & school community
- have your say!!



Want to get involved?

We are always looking for

VOLUNTEERS

Go to [SignUp.com](https://www.signup.com)

Sign Up



**JOIN THE
INMAN PAC
EXECUTIVE**

INMAN PAC Vacancies

Events & Fundraising

Time commitment: Based on volume of activities initiated

- Determine and coordinate PAC fundraisers and events to foster school community and provide updates at PAC meetings
- Gather event/fundraising committee members to assist with planning
- Liase with school administrator regarding school logistics of activities and work closely with Treasurer to keep informed of PAC finances

Handover and training will be available to all new executive members and it's a great way to be involved!



INMANPAC



INMAN.PAC



INMANPAC@GMAIL.COM

HOT LUNCH & Milk



WINTER 2026 IS OPEN FOR ORDERING!

Order now in your

MunchaLunch account



FUEL CATERING HOT LUNCH & MILK



Orders and full payment must be received by the 'Order deadline' date. If not, your order will be cancelled.



Wednesday Hot Lunch	Thursday Milk & More	Order by Monday	Theme
January 7	January 8	December 29	Favourites Day
January 14	January 15	January 5	Pasta Day
January 21	January 22	January 12	Sushi & Wrap
January 28	January 29	January 19	Burger Day
February 4	February 5	January 26	Hotdog Day
February 11	February 12	February 2	Favourites Day
February 18	February 19	February 9	Pasta
February 25	February 26	February 16	Sushi & Wrap
March 4	March 5	February 23	Burger
March 11	March 12	February 23	Hotdog

NEW

MONTHLY



Subway Date

Monday Jan 12

Monday, Feb 23

Friday March 13

Order Deadline

Monday, Jan 5

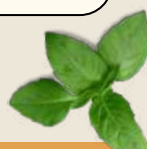
Monday, Feb 16

Monday Feb 23

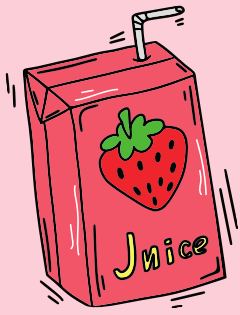


WE NEED VOLUNTEERS SIGN UP HERE

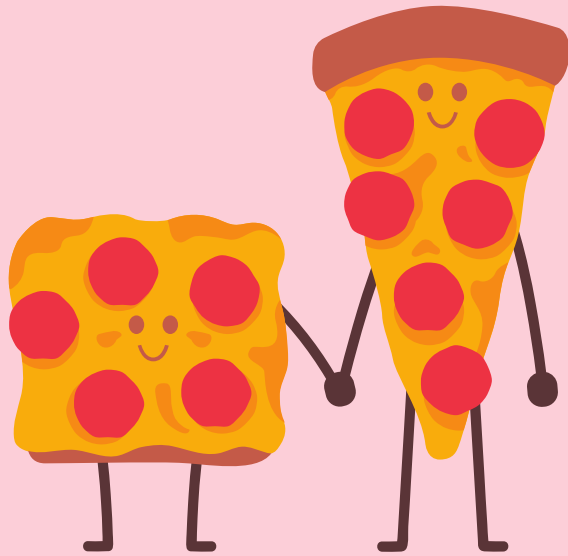
* Unclaimed hot lunch cannot be saved if student is absent. Email inmanpac@gmail.com to arrange pick up, or it will be donated. We will not be able to process refunds.



*Due to the ongoing impact of inflation on food supplies, fuel, and labor, our hot lunch vendor have made some adjustments to their menu prices, in turn having our cost go up.



VALENTINE'S DAY

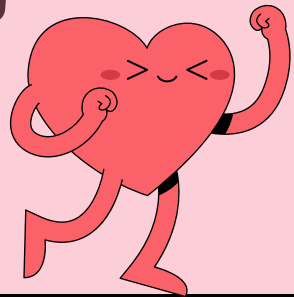
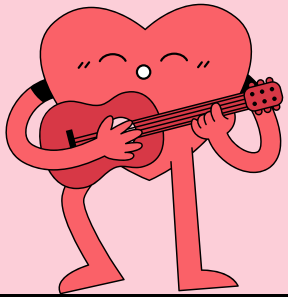


GLUTEN FREE OPTIONS



HOT LUNCH

PIZZA, POPCORN, AND JUICE!



ORDER NOW ON MUNCHALUNCH

WITH EVERY COMBO ORDER, YOU WILL RECEIVE A FREE GIFT!

PAYMENT DUE

MONDAY, FEBRUARY 2ND

HOT LUNCH DAY

13 FEBRUARY

VOLUNTEERS NEEDED! PLEASE SIGN UP TO HELP OUT



THANK YOU!

TO EVERYONE WHO HELPED
SUPPORT US IN
ALL OF OUR FUNDRAISING!!



**INMAN PAC
❤️ S
VOLUNTEERS!**

• Halloween Pizza Profit \$ 1,237 • Neufeld Profit \$ 796 • Purdys Profit \$ 1,111 • Winter Treat Week \$ 1,400

WE RAISED A TOTAL OF \$4,544!!!

**MORE INMAN FUNDRAISERS
COMING SOON!**

CANADIAN PARENTS FOR FRENCH

JOIN NOW

Activities organized by the CPF Burnaby Chapter

- Organizing **French Lessons for Parents** at various levels
- Enabling **French Book Subscriptions** for students, Ecole de Loisirs, for every 10 subscriptions bought by parents, one is free for the school les Abonnements-livres max de l'école des loisirs (ecoledesmax.com)
Potential Literacy Grant for subscriptions of Ecole des Loisir French Books for the School Library for each school
- **Skating with Bonhomme** event – come and skate with Bonhomme, listen to French Christmas music and have a snack
- **French Movie Nights** – families are invited to participate to see a French Movie
- **Fete des Artes** – helping to fund French Theatre, Music Performance or Workshops brought to the schools in partnership with CPF BC and Yukon
- **CPF Summer Solstice BBQ** – bring a dish to share and come and join us for fun activities and socializing at one of our Burnaby parks French
- **Summer Camp** – two-three weeks of summer camp in French at a location near you, includes reading, activities, field trips, arts and lots of fun.
- **Reading French books** for the little ones, via zoom or at a library
- **Performing French Rock Music** at various school events
- Organizing **French Talent Show**



**MEMBERS
JOIN
FOR
FREE**

Donations can be made directly to **CPF Burnaby Chapter** – via email cpfburnabychapter@gmail.com, to ensure funds are used within our community

<https://cpfburnaby.ca/>



oliver's labels

FREE SHIPPING



Durable labels for all your kids' stuff!

Thank you for supporting **École Inman Elementary!**

Shop now and **20%** of your purchase will go right back to our school.

Feel free to share the referral link with your friends!

www.oliverslabels.com/Ecoleinman

Custom Packages

Combine products you need to create your very own package that's just right for you.



Found-it™

Found-it™ is our free online lost-and-found system and is only available on oliverslabels.com!

